

DIVES

A. Little Island, all around the south and south-east sides.
 B. Wreck, deep water, experienced only.
 C. Boondelbah Gutter, only dive available in strong north-east weather.
 D. The Peak, excellent dive.
 E. Wreck.
 F. Shark Island, 2nd best dive, sponge gardens.
 G. Off Lighthouse, black coral, rock ledges.
 H. Enormous ship's anchor in 21m of water, wreck nearby, off shell-grit beach.
 I. Gantry Bay good dive in bad southerly weather.
 J. Off the point, boulders and ledges onto sand in 14 metres of water.
 K. Wreck.
 L. Inner Light, Nelson Head, sponge garden, only on slack tide.
 M. Fly Point, sponge garden, ledges, drop overs, lots of fish. Dive on turn of tide. Good when weather is bad outside.

Dive information supplied by Owen and Linda Griffiths of Advance II Charters

FISHING

1. Uralla, kingfish, snapper, jewfish, late afternoon.
 2. Boulder Bay Inner, squire, mowong.
 3. Boulder Bay Outer, squire, mowong.
 4. Gunsight, trevally, squire, kingfish. Best at dawn and dusk for snapper and jewfish. A heavily fished reef.
 5. Inner V, snapper, traglin, mowong.
 6. Outer V, kingfish, snapper, trevally and mowong.
 7. Little Gibber Wide, traglin, snapper and mowong.
 8. 21, kingfish and jewfish.
 9. Looking Glass Wide, all species.
 10. Broughton Wide, snapper and jewfish
 11. Big Gibber, snapper and kingfish. Look out for fish traps.
 12. The Peak. The Pinnacle. From a bottom of 36 metres this reef shallows to 11 metres. Anchor over this reef and fish the sides for jewfish (on live bait), trevally, kingfish and snapper. Another sight to help you line up is to put the Radio Tower over the third peak south of Tomaree.

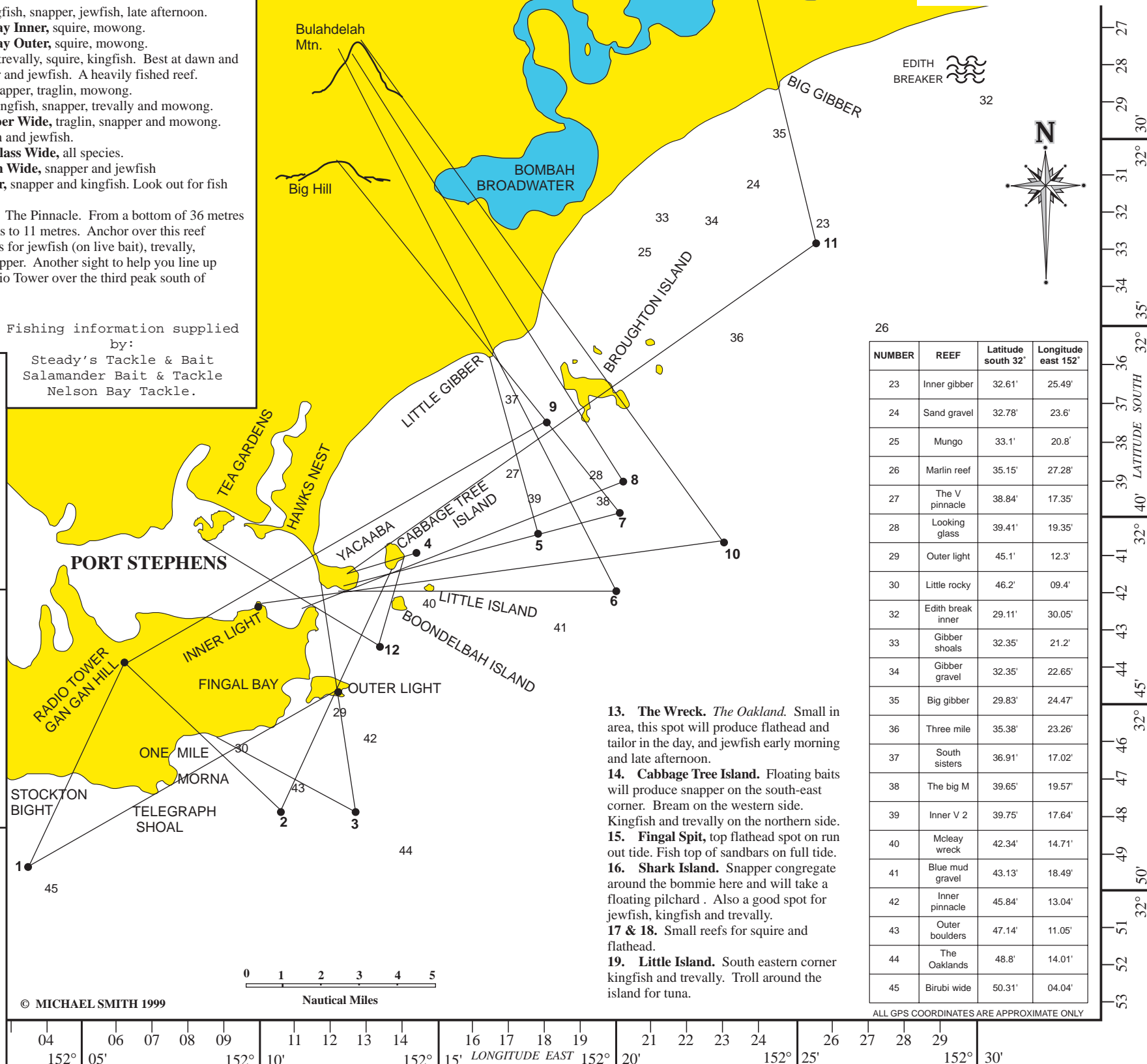
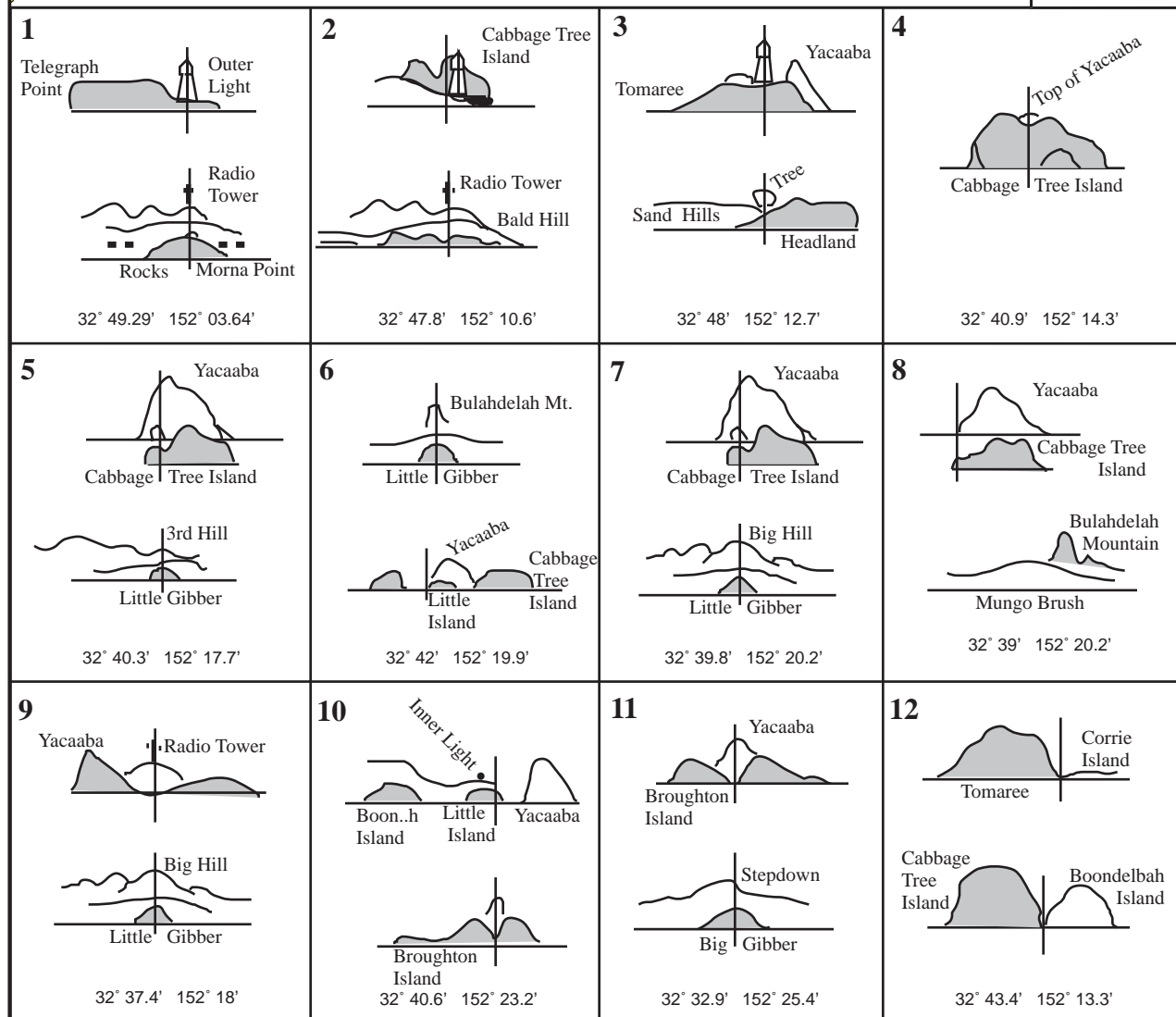
Fishing information supplied by: Steady's Tackle & Bait, Salamander Bait & Tackle, Nelson Bay Tackle.

PORT STEPHENS OUTSIDE Fishing Marks

ALL FEATURES ON THIS CHART ARE SHOWN IN THEIR APPROXIMATE POSITIONS ONLY

THIS CHART IS NOT FOR NAVIGATION USE

20. Tomaree. The best and most convenient place to catch live bait from a boat. One of the best land-based game fishing spots in the state, off the rocks. Bluefin and mackerel tuna, shark and cobia, using a live yellowtail under a float or balloon, when the water temperature is over 18°. Jewfish can be caught on the rugged bottom at dawn and dusk. Tailor, squire and bream 50 metres off Mrs. Murphy's.
 21. Boondelbah Island. Southern and western sides squire and trevally. Eastern side jewfish and kingfish, and in the broken water snapper on a floating bait. Flathead drifting across the sand 200 metres west of the island



NUMBER	REEF	Latitude south 32°	Longitude east 152°
23	Inner gibber	32.61'	25.49'
24	Sand gravel	32.78'	23.6'
25	Mungo	33.1'	20.8'
26	Marlin reef	35.15'	27.28'
27	The V pinnacle	38.84'	17.35'
28	Looking glass	39.41'	19.35'
29	Outer light	45.1'	12.3'
30	Little rocky	46.2'	09.4'
32	Edith break inner	29.11'	30.05'
33	Gibber shoals	32.35'	21.2'
34	Gibber gravel	32.35'	22.65'
35	Big gibber	29.83'	24.47'
36	Three mile	35.38'	23.26'
37	South sisters	36.91'	17.02'
38	The big M	39.65'	19.57'
39	Inner V 2	39.75'	17.64'
40	Mcleay wreck	42.34'	14.71'
41	Blue mud gravel	43.13'	18.49'
42	Inner pinnacle	45.84'	13.04'
43	Outer boulders	47.14'	11.05'
44	The Oaklands	48.8'	14.01'
45	Birubi wide	50.31'	04.04'

ALL GPS COORDINATES ARE APPROXIMATE ONLY